



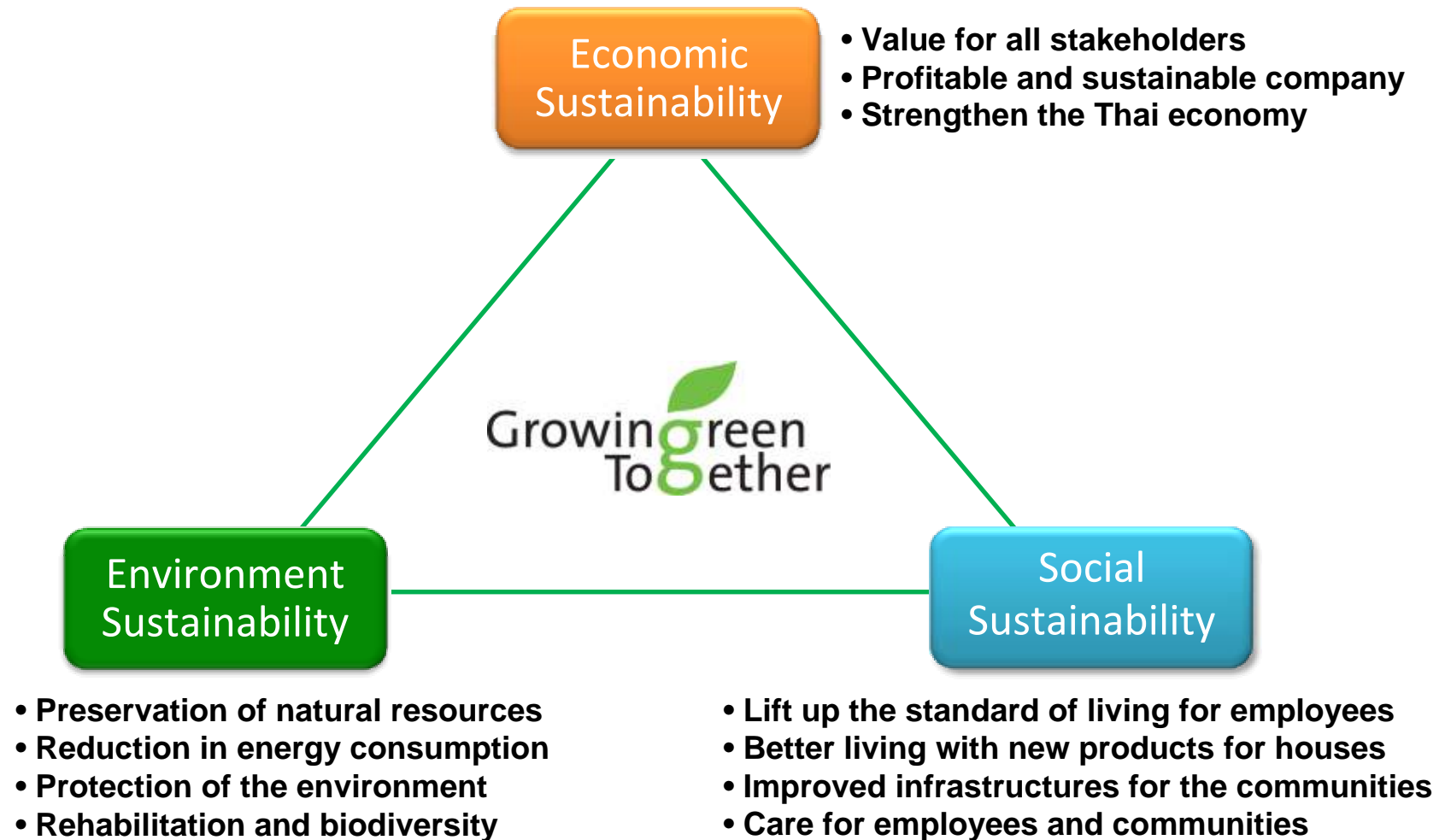
“Growing Green Together”

What is Sustainable Development?

“Sustainable development is development that meets the needs of the present without compromising the ability of future generations to meet their own needs”

**International Institute for Sustainable Development*

SCCC and Sustainable Development



The 3 Pillars of Sustainable Development



Economy

Including creating wealth and growth opportunities for the business and its stakeholders.



Society

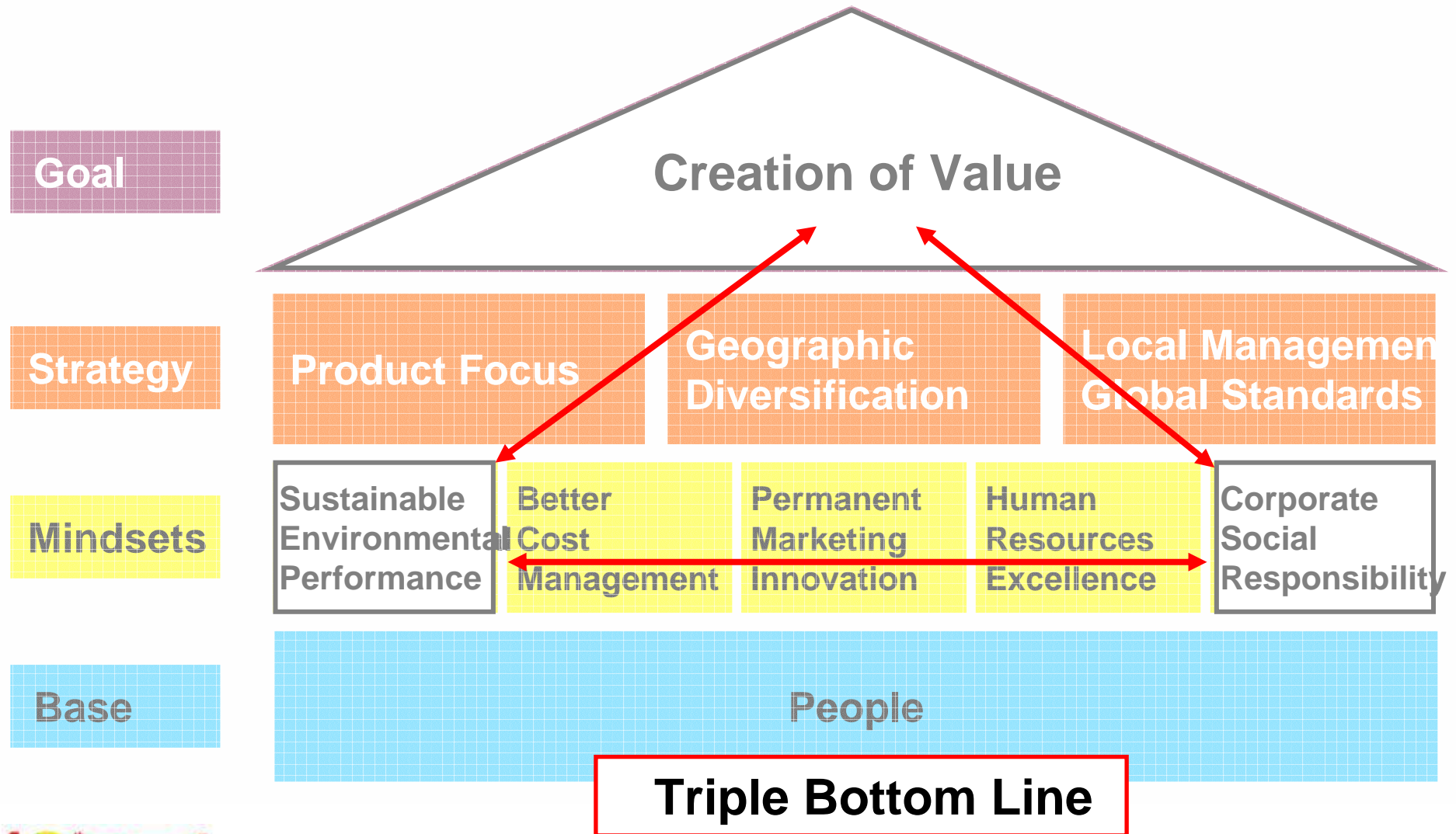
Including social development for a better quality of life for employees, communities and the nation.



Environment

Through efficient use of resources and creating systematic and efficient work processes, bearing in mind the need to reduce environmental impact and to promote environmental rehabilitation.

CSR as part of “Triple Bottom Line” is reflected in the Holcim
“Strategy House”



Sustainable Development Priorities

1. Energy and Climate Change
2. Stakeholder Engagement
3. Community Involvement and Development
4. Alternative Fuel & Raw Materials
5. Product & Service Innovation

Energy and Climate Change



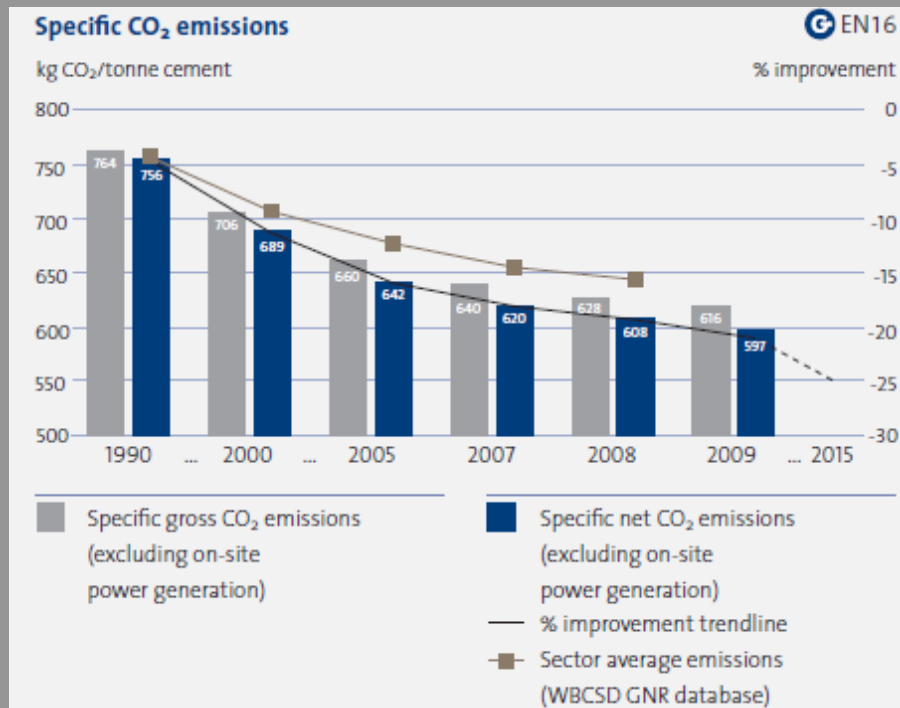
Energy & Climate Change

Stakeholder Engagement

Community Involve & Devel.

AFR

Product & Service Innova.



• Reduce CO₂

- Optimizing products and processes
- investing in R&D of new cement
- Using alternative fuels

Energy and Climate Change



Energy &
Climate Change

Stakeholder
Engagement

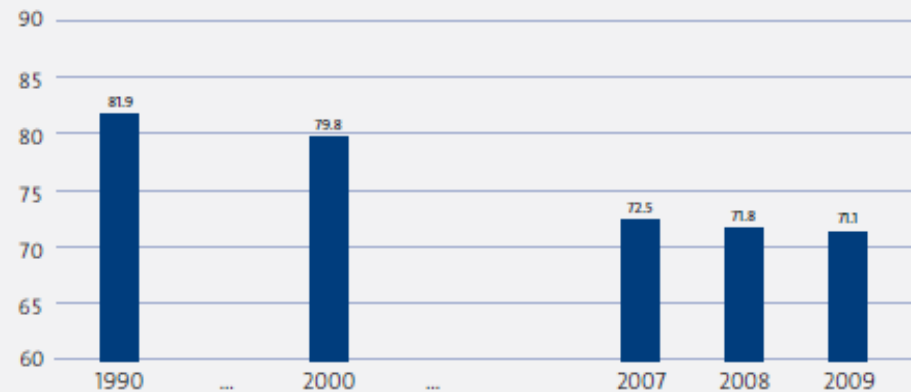
Community
Involve & Devel.

AFR

Product &
Service Innova.

Clinker factor

Average % of clinker in cement



- Lower Clinker Factor

Energy and Climate Change



Energy &
Climate Change

Stakeholder
Engagement

Community
Involve & Devel.

AFR

Product &
Service Innova.



- Improve energy efficiency
 - Use Waste Heat Recovery

Stakeholder Engagement



Energy &
Climate Change

Stakeholder
Engagement

Community
Involve & Devel.

AFR

Product &
Service Innova.



40 ปี อินทรีย์ รากฐาน..สู่อนาคต...



customers



community



employees



business
partners



Community Involvement and Development



Energy &
Climate Change

Stakeholder
Engagement

Community
Involve & Devel.

AFR

Product &
Service Innova.



- Check Dam
- Green School



Alternative Fuel and Raw materials



Energy &
Climate Change

Stakeholder
Engagement

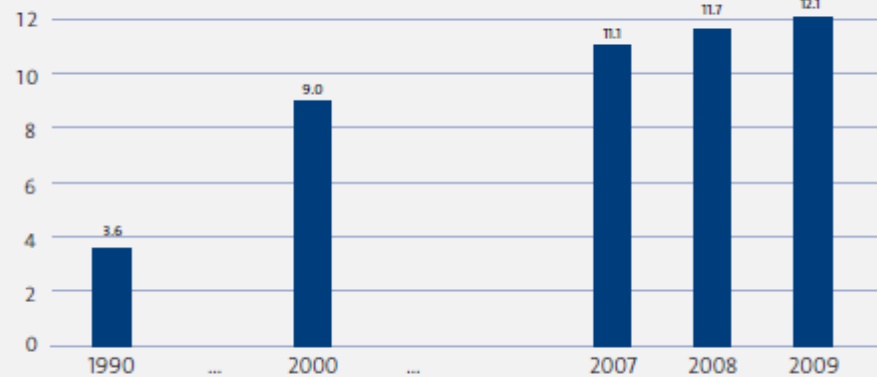
Community
Involve & Devel.

AFR

Product &
Service Innova.

Thermal substitution rate by alternative fuels

% of thermal energy from alternative fuels



* Due to ownership changes in 2009, figures for previous years have been restated.

Alternative Fuels and Raw materials

- Reducing the use of non-renewable resources



Geocycle : Cement Co-Processing

Solid Feeding system at K3



Sludge Feeding System at K4



- In 2008, SCCC had co-processed 284,000 tons of alternative fuels and raw materials into the cement kilns from industrial and non-industrial wastes
- 40,000 tons of this total represented the alternative fuels substituting 3.1% of the traditional fuels used in the production.
- 25,000 tons of this volume were solid materials which were pre-processed before being sent to the cement kilns to provide homogenous alternative fuels.

Product Development and Innovation



Energy &
Climate Change

Stakeholder
Engagement

Community
Involve & Devel.

AFR

Product &
Service Innova.



First group of companies granted Carbon Label

- Granted by Thailand Green House Gas Organization (TGO) associate with Thailand Environmental Institute (TEI)
- CO2 reduction from 2002 to 2007 more than 10%
- SCCC reduction by Brand
 - ▶ Insee Petch reduce CO2 14.3%
 - ▶ Insee Dang reduce CO2 23.0%
 - ▶ Insee Dum reduce CO2 16.4%
 - ▶ Insee Fah reduce CO2 15.6%

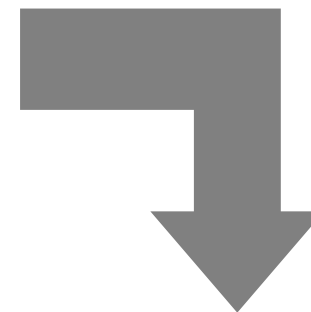
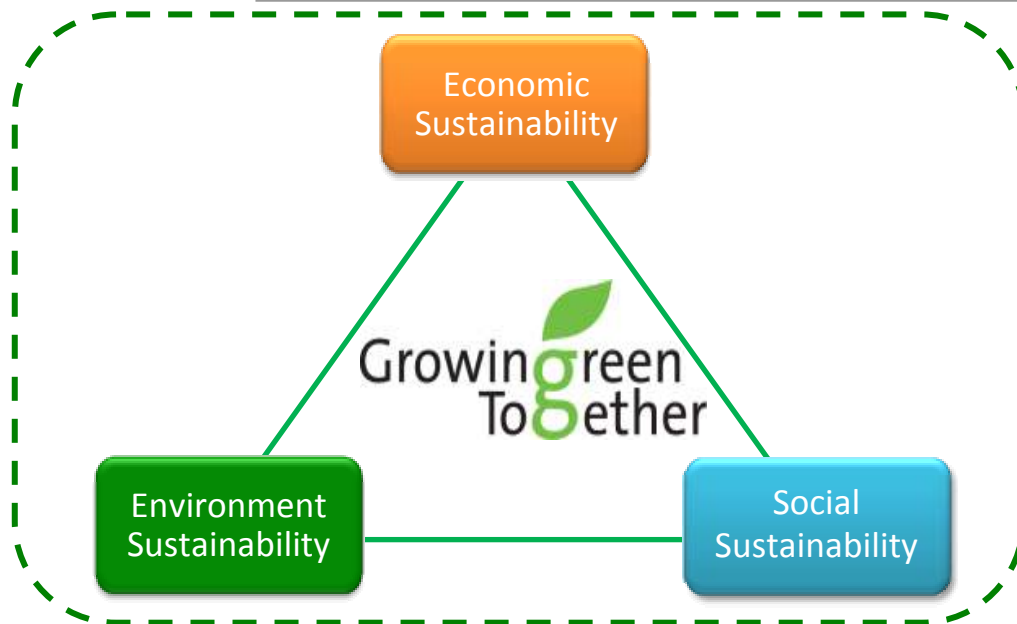


CO2 Emission Reduction and Innovation product

Cement type	Clinker fraction 45	Clinker fraction 50	CO2 emission 45	CO2 emission 2550	% Reduction
Insee petch	93.39	94.87	841.72	721.14	14.32
Insee dang	64.22	58.07	584.99	450.18	23.04
Insee dum	94.9	93.96	855.01	714.59	16.42
Insee tong*	52.3	53.37	403.41	415.56	-3.01
Insee poon keaw*	57.82	56.56	443.67	439.06	1.04
Insee fah	96.01	96.06	864.78	730.06	15.58



From Growing green Together to green Heart



Visual Communication Tool: Logo and tagline



5R's is how to live a Green Heart life

Think green, Act green, Live green



5R's: A Path To Sustainability



Reinvent

Reinventing is the way we interact with our natural environment and with...our wallet

INSEE way:

- INSEE ThruCrete
- Backhauling
- Check Dam

5R's: A Path To Sustainability



Reduce

Reducing means choosing to use things with care to reduce the amount of waste.

INSEE way:

- Carbon Label (20% over 5 years)
- Use of NGV in transporters
- Baan U Sabai

5R's: A Path To Sustainability



Reuse

Reusing involves the repeated use of items or parts of items which still have usable aspects.

INSEE way:

- Waste Heat Recovery (WHR)
- Geocycle business

5R's: A Path To Sustainability



Replacing conventional product with an environmentally friendly product.

INSEE way:

- CONWOOD products
- Cement bags moisture protection sheet, change from plastic > wax

5R's: A Path To Sustainability



Recycling means the use of Waste itself as resources.

INSEE way:

- Cement bags
- Reusing waste water at concrete plants